

Sponsored Program Summary
FY13
September, 2013

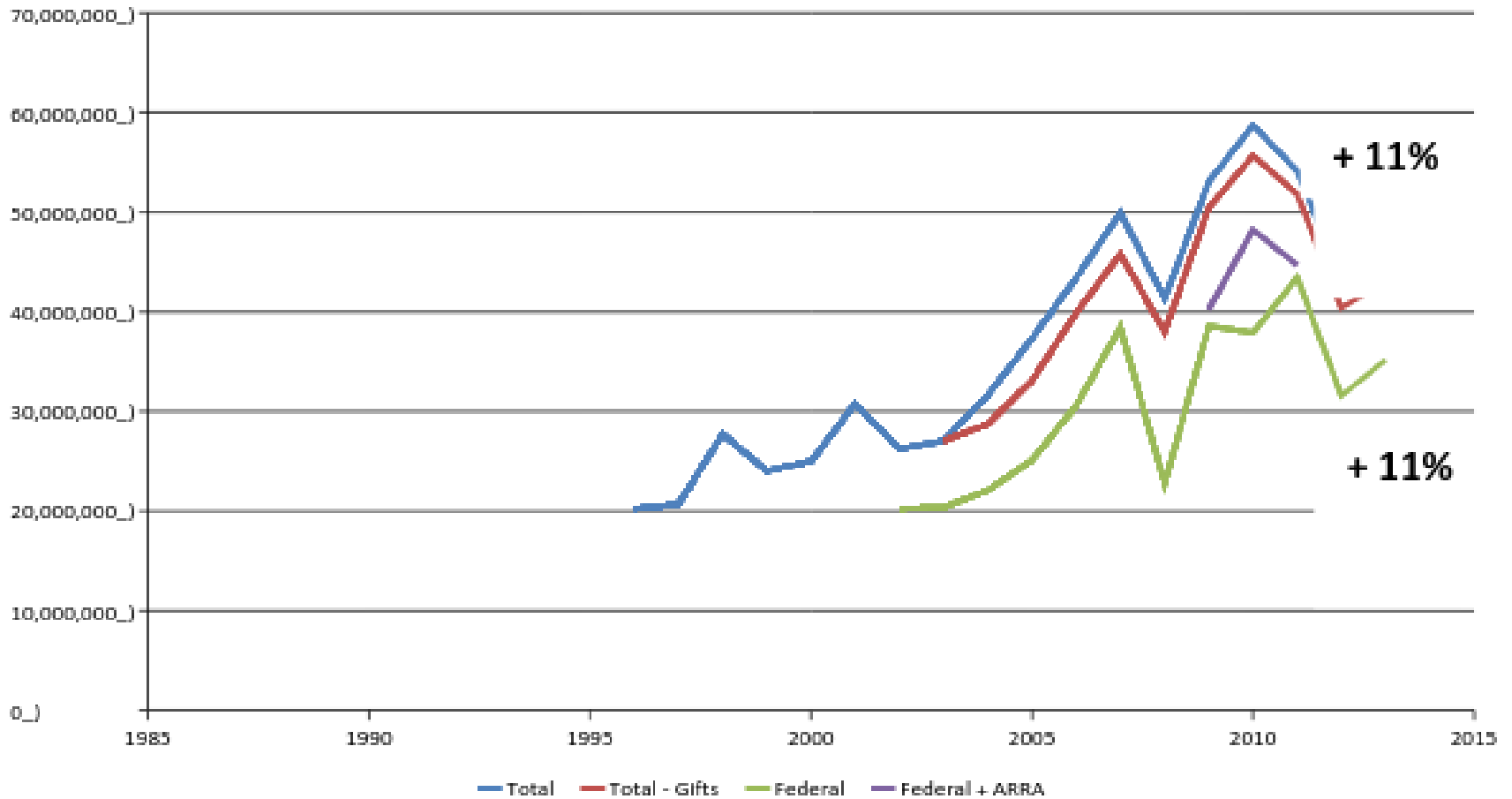
Dave Reed
Vice President for Research

Michigan Tech

Outline

- Sponsored Awards, FY13
- Research Expenditures, FY13
- Intellectual Property/Commercialization, FY13
- Corporate Sponsorship, FY13
- MTEESC/SI

FY13 Sponsored Program Awards



Michigan Tech

Sponsored Awards, FY13

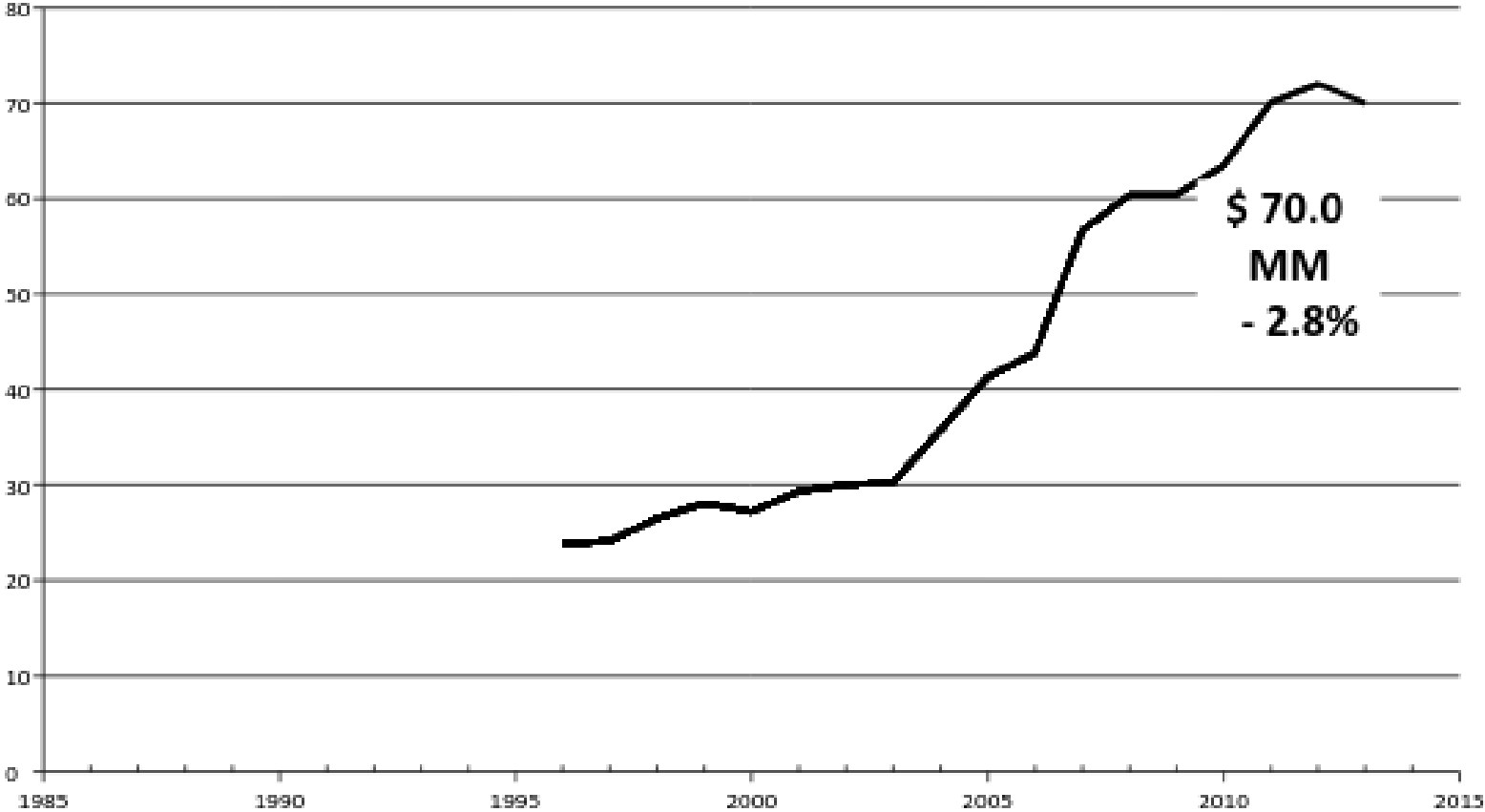
Sponsor Category	FY13 (Preliminary)	FY12	% +/-
Federal	\$ 35,144,558	\$ 31,593,723	+ 11 %
Other Sponsored	\$ 7,846,484	\$ 8,820,877	- 11 %
Gifts	\$ 4,993,501	\$ 2,878,561	+ 73 %
TOTAL	\$ 48,016,845	\$ 43,293,161	+ 11 %

Michigan Tech

Sponsored Awards, FY13

- During FY13, 69.9% of the tenured and tenure track faculty were Principal Investigator or co-PI on a submitted proposal.

Research Expenditures, FY13



Research Expenditures, Fy13

- Preliminary research expenditures declined by 2.8% from FY12.
- This seems to indicate a lagged response to the declines in Sponsored Awards in FY11 and FY12. It also includes some reductions in Internal Expenditures due to reclassifications.

Research Expenditures, FY13

- On June 30, 2013, 56.4% of tenured and tenure track faculty were Principal Investigator or co-PI on an active sponsored project.

Intellectual Property, FY13

	3 rd Qtr. FY13	3 rd Qtr. FY12	% +/-
Disclosures	51	50	+ 2 %
NDA's	111	100	+ 11 %
Patents Issued/Filed	27	20	+ 35 %
License Agreements	26	19	+ 37 %
Royalty/Option	\$ 193,985	\$ 248,553	- 22 %

Michigan Tech

Corporate Sponsorship

PRELIMINARY

Sponsored

Awards

-Industry-

COMBINED

Fiscal Year 2013

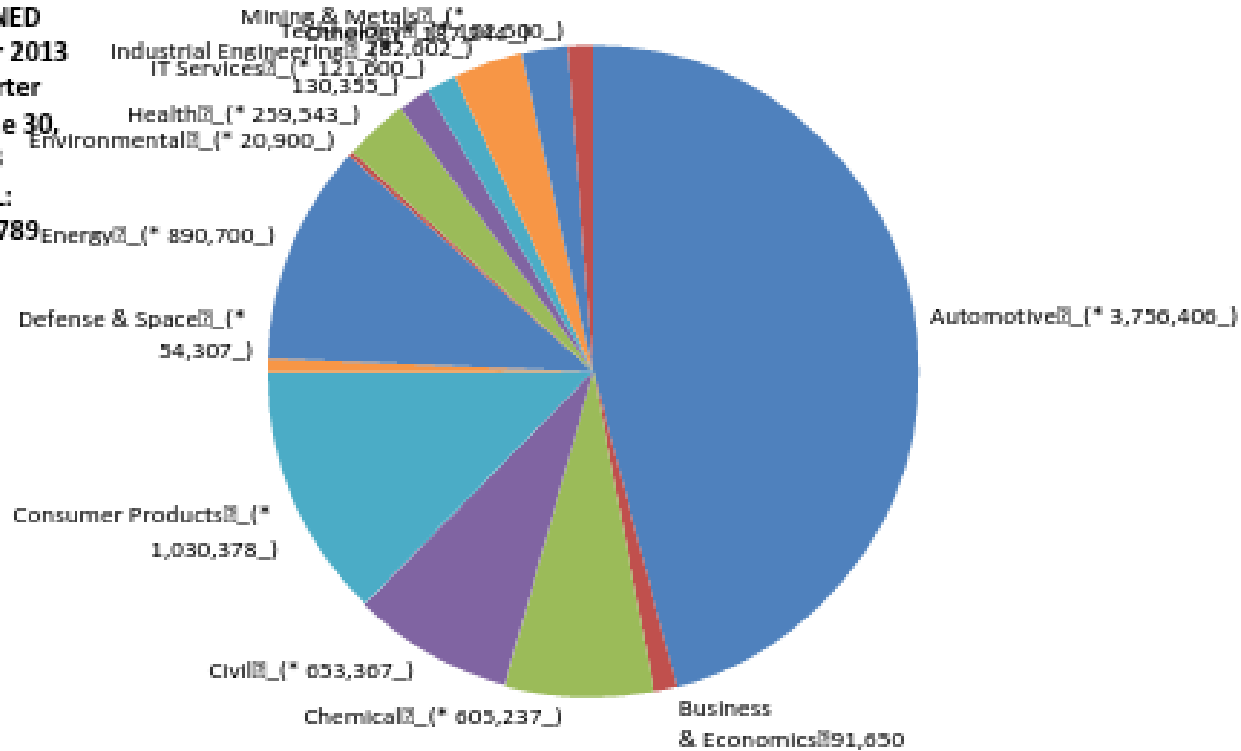
4th Quarter

Ended June 30,

2013

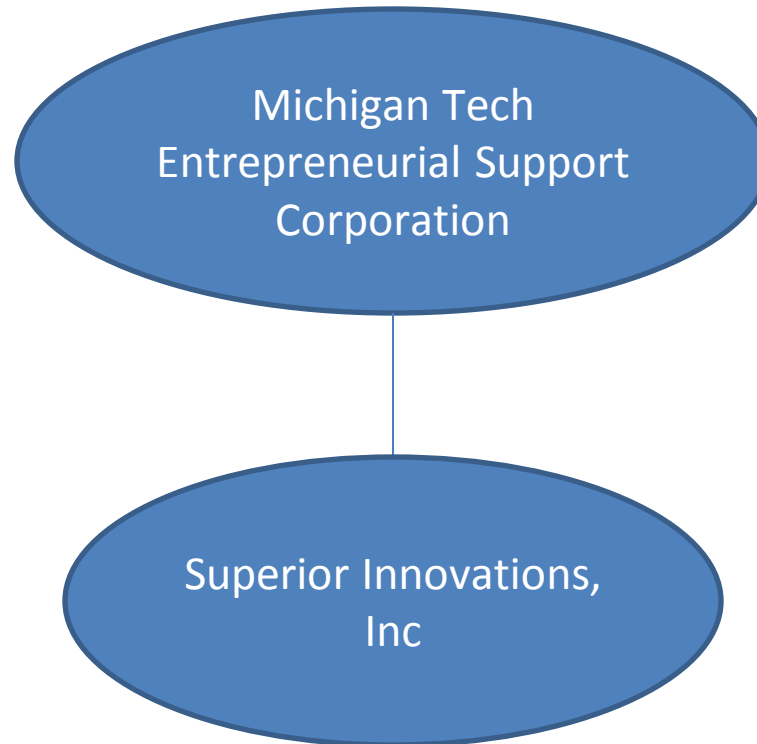
TOTAL:

\$8,186,789



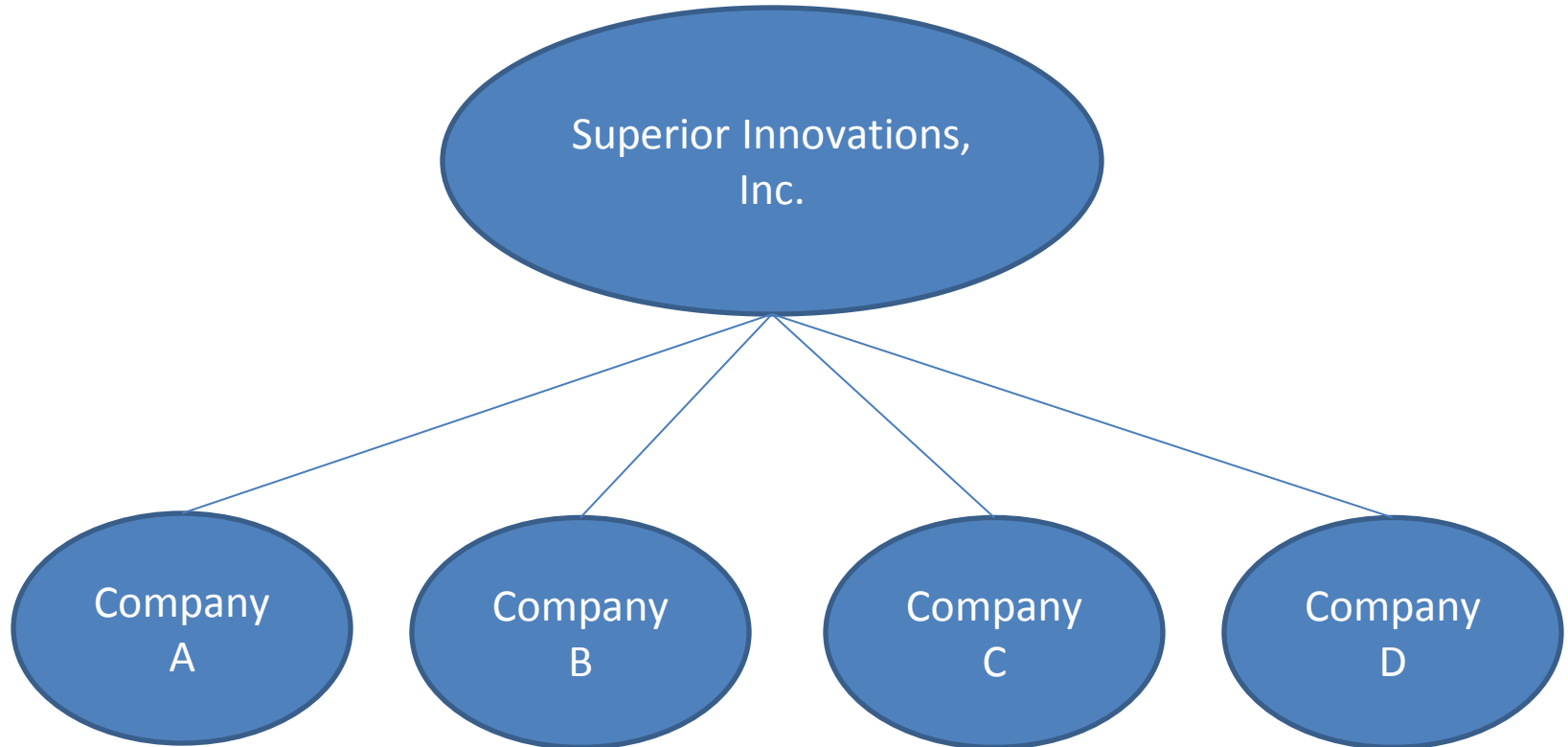
Michigan Tech

MTESC/SI



Michigan Tech

MTESC/SI



MTESC/SI

- **Superior Probes, Inc.** Dr. Bi (Chem), Cellular probes for research and medical diagnostics
- **Nano Innovations, LLC.** Dr. Yap (Physics), High quality boron nitride nanotubes (heat sink material)
- **Frost Research Center, LLC.** Dr. Frost (Biomed), Calibrated delivery of nitric oxide for antimicrobial applications
- **MicroDevice Engineering, LLC.** Drs. Minerick and Raber (Chem Eng and ILI), Lab-on-a-chip device for rapid blood typing

MTESC/SI

- Nano Innovations, LLC

– 2011	REF-TC proof of concept	\$ 12,000
– 2012	NSI I-Corps customer discovery	\$ 50,000
– 2012	MII E proof of concept	\$ 45,000
– 2012	T3N Postdoc Fellowship	\$ 25,000
– 2013	NSF STTR proof of concept	\$ 225,000
– 2013	Emerging Technology Fund	\$ 25,000

Total		\$ 382,000
-------	--	------------

Michigan Tech